



## Playout Centre for SBS in London

Projecting, Implementing & 24/7 Service

**Project Description:** For SBS Broadcasting Network in London we set up a new playout centre with central ingest. Starting in 2004 with seven full programme and six niche channels, today more than 20 transmission chains are processed by the multiformat capable (SD/HD) infrastructure for the broadcasting in 7 countries across Europe.

Within a 24/7 service agreement our AV & IT specialists take care of the maintenance and the further development of the playout infrastructure. The 1st level support is carried out on-site as well as remote from our headquarters in Cologne, Germany.



SBS Playout Centre in London



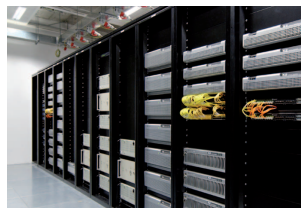
Master control room



Central alarm system



Nearline archive, DDN



Grass Valley media server



Time control system

**Ricki Berg, Head of Projects at SBS in London:** *“From the beginning, the challenging technical realisation as well as the ongoing expansion of our Playout Centre have been handled by our system integration partner Wellen+Nöthen. This underlines the significance of our successful long-term partnership.”*

### Technical Specifications (Excerpt)

- + Central Trinx router, 512 x 416 I/Os (SD/HD)
- + Trinx NXT router 64 x 64 I/Os (SD/HD), upgradeable to 512 x 512 I/Os
- + 11 Grass Valley 32 x 32 Concerto routers for channel routing
- + Redundant Harris NEXIO AMP HD server pool for playout
- + Independent & redundant Grass Valley K2 servers for playout & ingest
- + Central video content management system VPMS from S4M
- + Aveco Automation with 1 backoffice server & 4 Orbiter automation server
- + MediaGenix Whats'On programme planning software
- + 200 TB Data Direct Network nearline archive
- + 2 Quantum Scalar i2000 tape libraries, 1,200 TB storage
- + Cavena subtitling
- + Evertz MVP3000 multiviewer system
- + Network structure with 2 Cisco core switches